



MONTHLY MEMBERSHIP PROGRESS REPORT

District 1 F

Results as of: 05/31/2018

GMT: STEVE ANTON

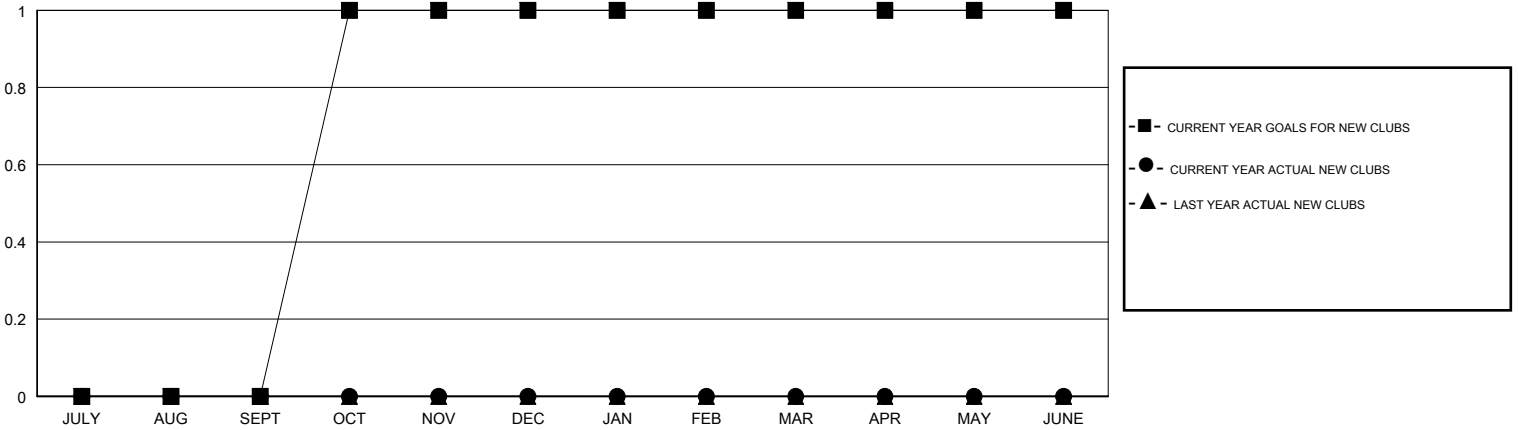
LOCATION ILLINOIS

GMT CA

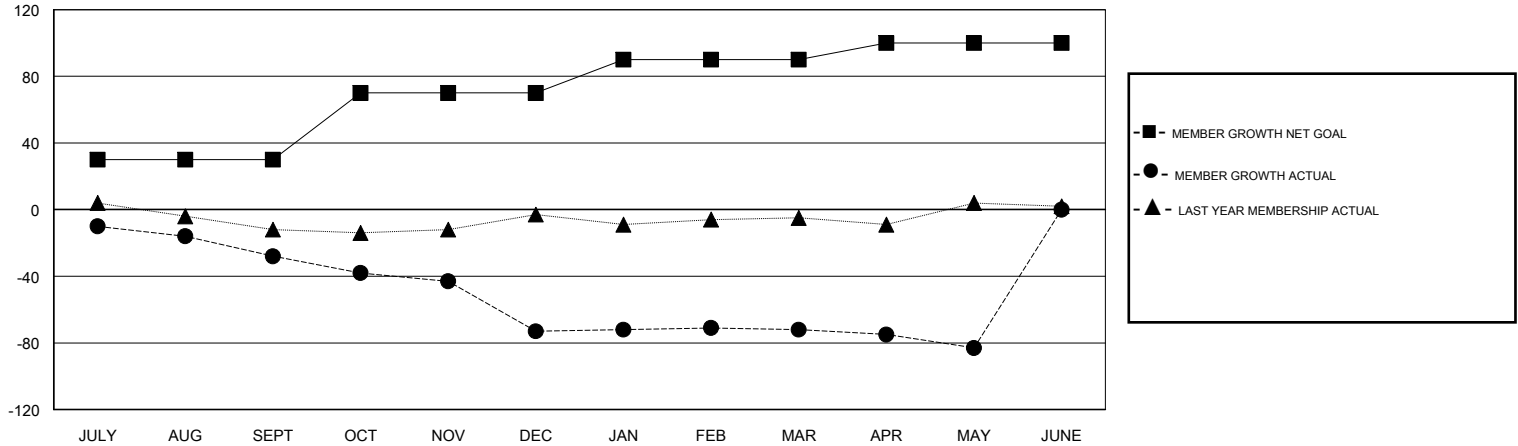
Clubs			
RESULTS FOR 2017-2018			
QUARTER	NEW CLUB GOAL	NEW CLUBS	DROPPED CLUBS
JULY/AUG/SEPT	0	0	0
OCT/NOV/DEC	1	0	2
JAN/FEB/MAR	0	0	0
APR/MAY/JUNE	0	0	0

Members			
RESULTS FOR 2017-2018			
QUARTER	MEMBER GROWTH NET GOAL	MEMBER GROWTH ACTUAL	DROPPED MEMBERS ACTUAL (including transfers)
JULY/AUG/SEPT	30	18	39
OCT/NOV/DEC	40	13	54
JAN/FEB/MAR	20	15	12
APR/MAY/JUNE	10	9	19

GOALS AND ACTUAL NEW CLUBS CUMULATIVE



GOALS AND ACTUAL MEMBERS CUMULATIVE



DROPPED CLUBS: 2	18 CLUBS OF 36 ADDED 1 OR MORE NEW MEMBERS	<u>GENDER DISTRIBUTION</u> MALE 728 (70.89%) FEMALE 299 (29.11%) Women Percentage Fiscal Year Goal: 20%
<u>DROPPED MEMBERS</u> DECEASED 14 CLUB CANCELLED 22 OTHER 88 TOTAL 124	CLICK HERE FOR CUMULATIVE MEMBERSHIP DATA	TOTAL FAMILY UNIT MEMBERS 175 FAMILY MEMBERS PAYING HALF DUES 90